

### ANALYSIS REPORT

File Name SN 01412\_01\_0.bmp

Input WL [nm] 632.8

Output WL [nm] 632.8

Waves per Fringe 1.0

#### ABERRATIONS magnitude

Peak to Valley 0.082 (1/12.2 waves)

RMS 0.016 (1/61.5 waves)

STREHL ratio 0.990

Tilt Removed

Defocus Removed

Astigmatism (low-order) Removed

Coma (low-order) Removed

Spherical Ab.(low-order) 0.038

Surface Diam

Curv. Radius

Target Conic Constant [K]

Best Conic Constant Fit

#### DATE

04/25/2021

#### OPERATOR

Ostahowski Optics, Inc.

#### INSTRUMENT

Interferometry

#### OPTIC DESCRIPTION

SN 01412

coma subtracted

Astigmatism tested @ Radius

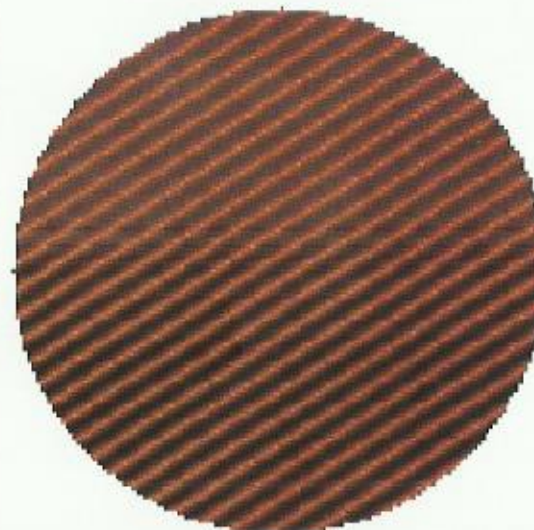
#### NOTES

15" f4.0

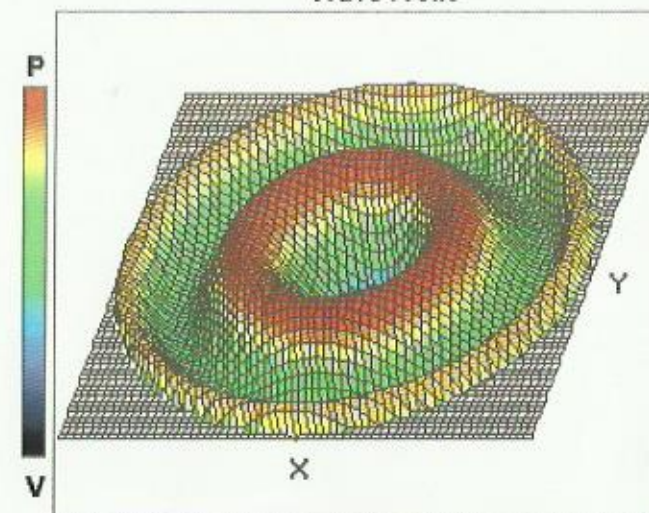
FL = 60.3"

Substrate: Fused Quartz

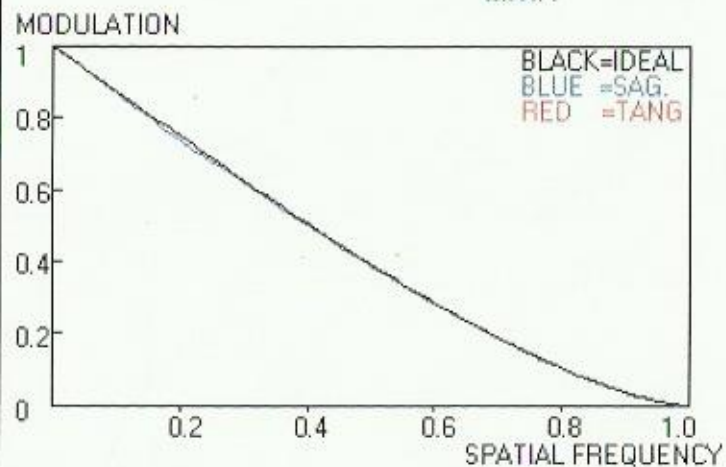
#### Synthetic Interferogram



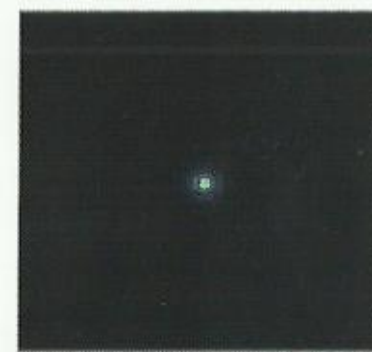
#### Wave Front



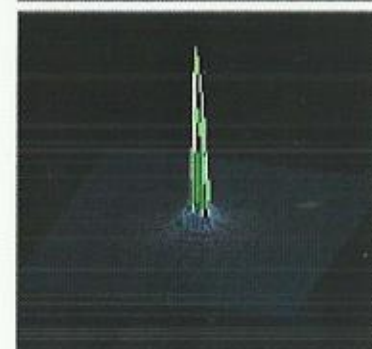
#### M.T.F.



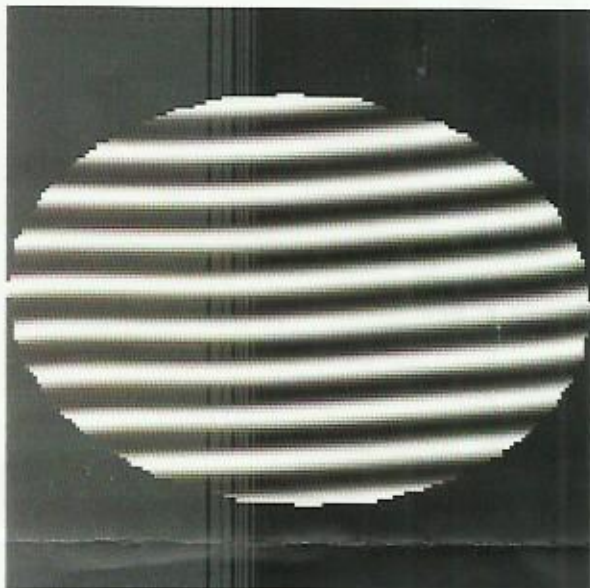
#### PSF Map



#### PSF Surface



# Quick Fringe Test Report


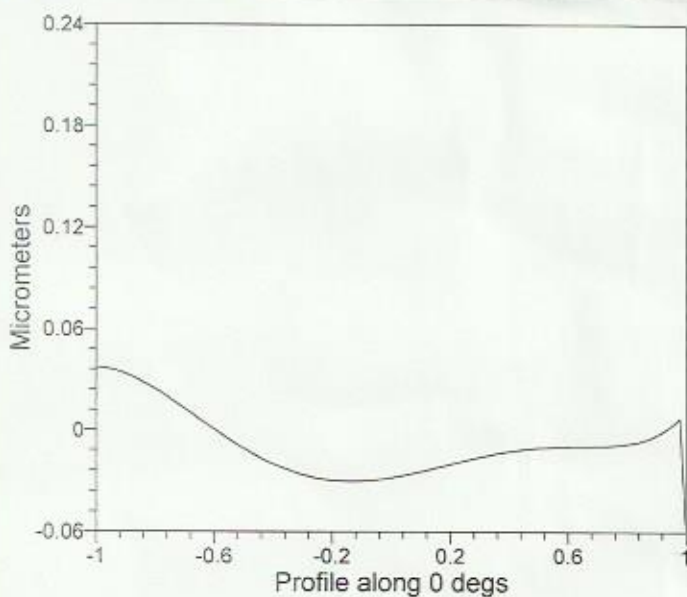
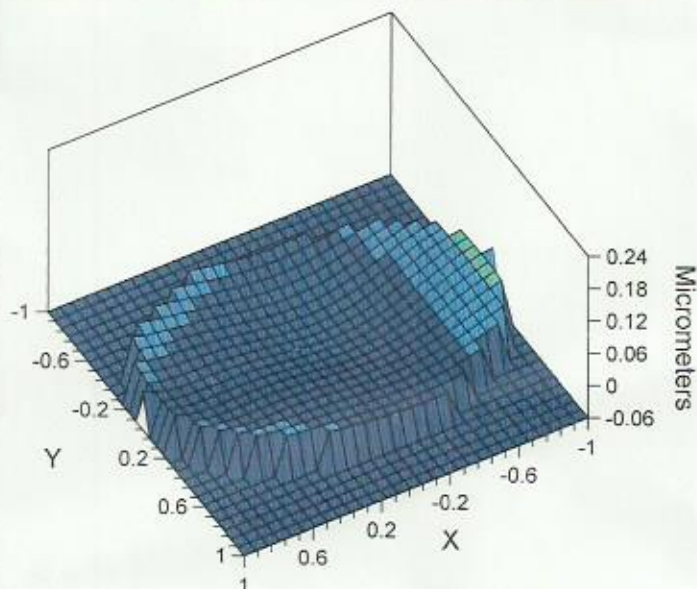
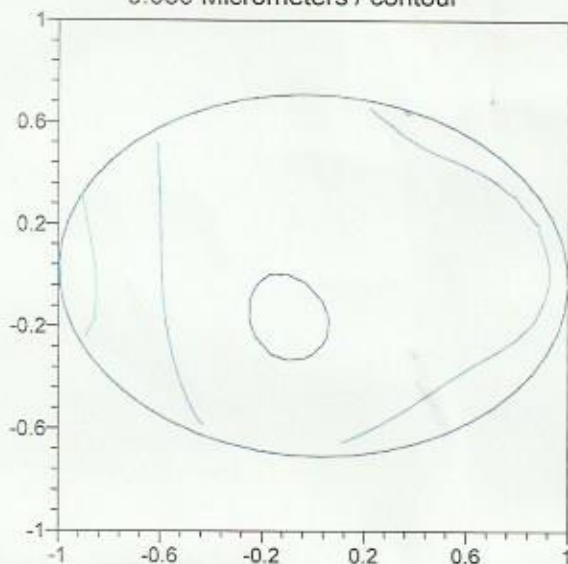


Output Units: Micrometers

RMS 0.015  
Peak-Valley 0.07

Wavelength 632.8 nm  
Data Points 109  
Description EDM SN 01528  
Date Tested Feb 25, 2021  
Operator ZYGO GPI

0.030 Micrometers / contour



**OSTAHOWSKI OPTICS, INC.**  
Precision Optics and Coatings



**Ostahowski Optics Inc.**  
Precision Optics and Coatings  
ostahowskioptics.com  
760-445-8398